

K-FLEX EC

K-FLEX EC (Bomba Class 0)

Elastomeric Closed Cell Insulation Thermal & Acoustic Insulation For HVAC/R



K-FLEX EC

"K-FLEX is the world's leading manufacturer of elastomeric insulation systems. In seventeen production facilities around the world, including Poland, France, China, India, Korea, Malaysia, Dubai, Egypt, the UK and the USA some 3,500 employees develop and manufacture outstanding product solutions for thermal and acoustic insulation.

K-FLEX is committed to ensuring its products comply with the fire safety and industry-wide safety standards.

K-FLEX has 63 sales offices on five continents, offering premium service to more than 50,000 customers.

As the world's fastest-growing company in the industry, K-FLEX is also a global player in the target markets of building services, refrigeration, air conditioning and ventilation, rail, shipping, automotive and beverage industries as well as the solar industry and OEM businesses.

K-FLEX has ISO 9001 and ISO 14001 certification."

PLANT TIMELINE



K-FLEX EC is a multi purpose flexible elastomeric thermal insulation with a built-in vapour barrier and a closed cell structure, this make K-FLEX insulation a high resistance to water vapour transmission which in turn enable the material to maintain a high level of energy conservation efficiency.

K-FLEX EC is a dust and fibre free insulation that make it an ideal product for apartments, commercial buildings, industrial plants, oil & gas industry, marine and offshore applications.

K-FLEX EC is the ideal choice for:

- Refrigeration pipework
- Hot water piping system
- Ducting system
- Large pipe and tanks
- Chilled water piping system
- Drainage system

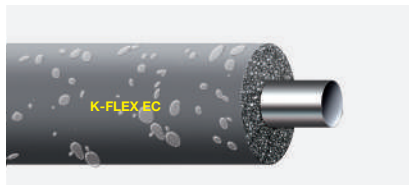
With 14 plants worldwide, K-FLEX can uniquely provide on-time delivery, consistent product quality and a highly competitive price.

ADVANTAGES



Low flame spread

When fire tested K-FLEX EC, it does not generate flaming droplets, and has a low fire propagation index. These results meet the fire performance requirement of Class "0" as defined in Building Regulations. Further guarantee is given by supervision contracts with independent laboratories and certification bodies.



High water vapour diffusion resistance

K-FLEX EC closed cell elastomeric insulation has a high water vapour diffusion resistance factor μ , that minimizes water vapour penetration, providing excellent long term performance.



Very low thermal conductivity

K-FLEX EC thermal conductivity is λ $0^{\circ}\text{C} = 0.034\text{W}/(\text{m}\cdot\text{K})$. The thermal conductivity coefficient is the most important factor in calculation focused on energy saving.



TECHNICAL DATA

Brief description	Flexible elastomeric foam, closed-cell insulation material
Material type	Nitrile Butadine Rubber
Colour	Black
Assembly	Light weight and flexible. Closed cell structure means no additional vapour barrier is required.

Property	Value/Assessment	Special Remark
Temperature Range	Max. service temperature: +116 °C Min. service temperature: -45 °C	Tested acc.to EN 14706, EN 14707 and EN 14304
Thermal Conductivity	$\lambda \leq 0.035 \text{ W/(m.K)}$ at +20 °C $\lambda \leq 0.034 \text{ W/(m.K)}$ at 0 °C $\lambda \leq 0.032 \text{ W/(m.K)}$ at -20 °C	Tested according to DIN EN 12667, EN ISO 8497
Water vapour diffusion resistance	Water vapour diffusion resistance: $\mu \geq 7,000$ Water Absorption % by volume < 1.1	Tested acc. To EN 12086, EN 13469 Test acc to ASTM C 209
Fire performance	Surface Spread of Flames: Class 1	Surface Spread of Flame: tested according to BS 476 Part 7:1997 Self-extinguishing, does not drip, does not spread flames
Other Fire Class	V0, 5VA Class 1 supervised M1 - NF supervised Class "0"	UL 94 Italy CSE RF 3/77 France Bomba
Chemical behaviour	Excellent resistance to ozone, oil and chemicals (consult product test list).	
Other certificates	Anti microbial Greenguard Low VOC	Tested acc. To ASTM G21 Tested acc. To ISO 17025 Tested acc. To ISO 16000 part -3, -6, -9, -11
Density	48 to 70 kg/m ³	
UV resistance	For UV protection K-FLEX finish paint required	

For temperatures below -50 °C please contact our Customer Service Center to request for the corresponding technical information.

The reaction to fire classification is valid on metal or solid, mineral surfaces.

Further documents such as test certificates, approvals and the like can be requested using the registration number given.

K-FLEX reserves the right to change data and technical requirements without notice.

PIPE INSULATION THICKNESS RECOMMENDATIONS

Conditions	Pipe Size			
	6mm - 28mm	28mm - 60mm	60mm - 114mm	114mm - 168mm
Ambient Temperature: 33°C Medium Temperature: 6°C Relative Humidity 60% 70% 80%	10 mm 19 mm 25 mm	13 mm 19 mm 32 mm	13 mm 19 mm 32 mm	13 mm 25 mm 32 mm
Ambient Temperature: 33°C Medium Temperature: 12°C Relative Humidity 60% 70% 80%	10 mm 13 mm 19 mm	10 mm 13 mm 25 mm	10 mm 19 mm 25 mm	13 mm 19 mm 25 mm
Ambient Temperature: 33°C Medium Temperature: -50°C Relative Humidity 60% 70% 80%	32 mm 50 mm 63 mm	40 mm 50 mm 75 mm	40 mm 60 mm 90 mm	50 mm 60 mm 100 mm

SHEET INSULATION THICKNESS RECOMMENDATIONS

Conditions	Ducts - Tanks - Vessels - Equipment Metal
Ambient Temperature: 33°C Medium Temperature: 6°C Relative Humidity 60% 70% 80%	13 mm 25 mm 40 mm
Ambient Temperature: 33°C Medium Temperature: 12°C Relative Humidity 60% 70% 80%	13 mm 19 mm 32 mm
Ambient Temperature: 33°C Medium Temperature: -50°C Relative Humidity 60% 70% 80%	50 mm 75 mm 125 mm



K-FLEX EC tube is available in 1.83 meters length. In sheet form, K-FLEX EC is available in roll or pre-cut sheet. All sheet material is available with or without self adhesive and/or self adhesive and aluminium foil.

RANGE ► K-FLEX EC TUBES (1.83 METRES)

Copper Pipe		Iron Pipe		6 • 1/4"		9 • 3/8"		13 • 1/2"		19 • 3/4"		25 • 1"		32 • 1 • 1/4"		40 • 1 • 1/2"		50 • 2"	
OC Inches	ø OD mm	LPS Inches	ø OD mm	size	m/box	size	m/box	size	m/box	size	m/box	size	m/box	size	m/box	size	m/box	size	m/box
1/4"	6					9x6	289	13x6	183	19x6	91								
3/8"	10	1/6"	10.2			9x10	201	13x10	139	19x10	73	25x10	47						
1/2"	12					9x13	183	13x13	117	19x13	66	25x13	46						
5/8"	15	1/4"	13.5	6x16	266	9x16	172	13x16	102	19x16	66	25x16	46						
3/4"	20			6x19	180	9x19	124	13x19	91	19x19	55	25x19	37	32x19	32				
7/8"	22	1/2"	21.3	6x22	180	9x22	117	13x22	89	19x22	55	25x22	35	32x22	24	40x22	18	50x22	12
1"	25			6x25	152	9x25	98	13x25	73	19x25	45	25x25	29	32x25	24	40x25	16	50x25	10
1 • 1/8"	28	3/4"	26.9	6x28	130	9x28	90	13x28	66	19x28	43	25x28	29	32x28	24	40x28	16	50x28	10
1 • 3/8"	35	1"	33.7	6x35	100	9x35	69	13x35	53	19x35	36	25x35	27	32x35	18	40x35	16	50x35	8
1 • 5/8"	42	1 • 1/4"	42.4	6x42	90	9x42	54	13x42	45	19x42	29	25x42	22	32x42	16	40x42	12	50x42	8
1 • 7/8"	48	1 • 1/2"	48.3			9x48	45	13x48	36	19x48	26	25x48	20	32x48	14	40x48	10	50x48	8
2 • 1/8"	54					9x54	42	13x54	36	19x54	22	25x54	16	32x54	14	40x54	10	50x54	8
2 • 3/8"	60	2"	60.3			9x60	42	13x60	29	19x60	20	25x60	16	32x60	10	40x60	8	50x60	8
3"	76	2 • 1/2"	76.1			9x76	36	13x76	27	19x76	16	25x76	11	32x76	8	40x76	8	50x76	6
3 • 1/2"	89	3"	88.9			9x89	33	13x89	21	19x89	16	25x89	11	32x89	8	40x89	8	50x89	6
4 • 1/2"	114	4"	114.3			9x114	27	13x114	22	19x114	13	25x114	7	32x114	6	40x114	6	50x114	6
		5"	139.8													40x140	4	50x140	4
		6"	165.2													40x168	4	50x168	4

RANGE ► K-FLEX EC SHEET IN ROLLS

Type	Thickness		Sheet 1.22 metre wide	
	mm	inches	format	m ² /box
PL/RO 06	6	1/4"	30 x 1.22	34.20
PL/RO 10	10	3/8"	20 x 1.22	22.80
PL/RO 13	13	1/2"	14 x 1.22	15.96
PL/RO 16*	16	5/8"	12 x 1.22	14.64
PL/RO 19	19	3/4"	10 x 1.22	11.40
PL/RO 25	25	1"	8 x 1.22	9.12
PL/RO 32	32	1 • 1/4"	6 x 1.22	6.84
PL/RO 40	40	1 • 1/2"	4 x 1.22	4.56
PL/RO 50	50	2"	4 x 1.22	4.56

* 16mm only available upon received Purchase Order from customer.



Self adhesive sheets available in all sizes.

PACKAGING ►

K-FLEX EC TUBES AND SHEETS

K-FLEX EC Tubes



Measurements:
2.1m x 0.394m x 0.32m

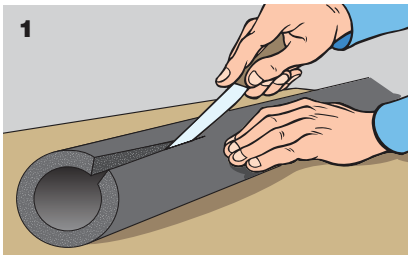


K-FLEX EC Sheets

Polyethylene bags
The bags allows for outdoor storage during the sorting stage.

Measurements:
0.5m x 1.23m

INSTALLATION ► FITTED PIPES

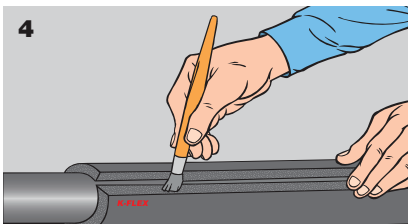
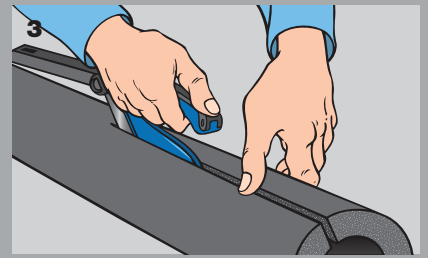


Use only the sharpest knife for cutting - this makes the subsequent glueing far easier.

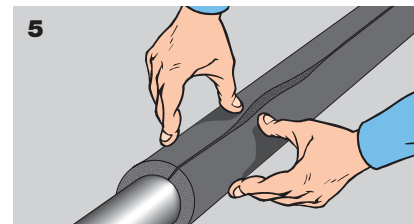
We recommend using the K-FLEX cutter which is ideal for longitudinal cuts.



The use of the cutter is illustrated in these two diagrams. Let the blade run along the tube without the tool's surfaces touching it to get a neat, clean cut.

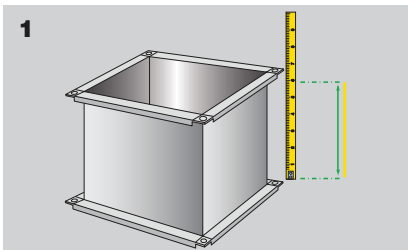


Position the tube so that the edges are separated, and apply an even layer of K-FLEX K-996 glue.



Once the glue has dried, reseal the tube, pressing the edges firmly together.

INSTALLATION ► INSULATION DUCTINGS

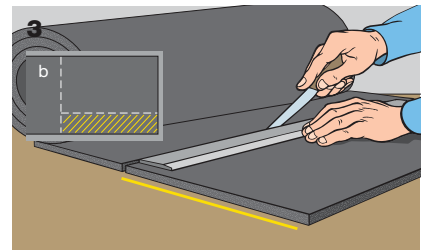


There are considerable advantages in using K-FLEX EC ROLL SHEET for ducting, which has the same height as the sheeting.

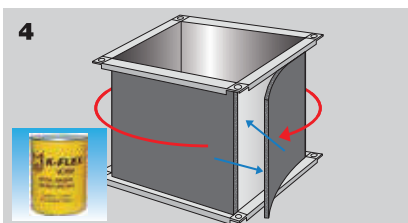
Take the measurements of the ducting section to be lagged.



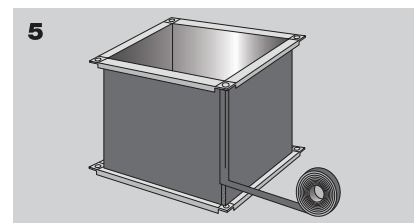
Use thinner to thoroughly clean the surface to be insulated. Insulation is not recommended where there is incrustation or other flaws which could prevent the sheeting from sticking perfectly.



Cut the corresponding portion out of the roll. There is an obvious saving in material by cutting the sheeting along its height (a) rather than along the length of the 1000 mm sheeting (b).



Glue the side of the sheeting to be stuck to the conduit and glue the conduit surface, then apply the sheeting, keeping it taut at the corners.



Cover the corner where the edges join with adhesive insulating tape. Compared to a similar operation carried out with 1000 mm sheeting, as well as the saving in material, there has only been one cut in the application.

PROJECT ► MALAYSIA

Exchange 106 @ TRX
Prudential Tower @ TRX
Genting Highlands
YTL HQ
D & Y Textile
Bukit Jalil Stadium
JAKIM Parcel A, B, C, D
National Institute of Health @ Setia Alam
Hospital UKM
Hospital Kajang
Columbia Asia Klang
Lalaport @ BBCC
Tropicana Garden Mall
Forest City Country Garden
D Rapport @ Amapang

PROJECT ► THAILAND

Mahanakhon Tower
Marriott Surawong
Palladium Hotel
Maya Chiangmai
Central Embassy Chiangmai
Promenada Chiangmai
Four Wing Grand Hotel
Dusit Hotel
Four Point Hotel
Best Western Hotel
Holiday Inn Hotel
Vana Belle Hotel
Paradise Park
The Nine Community Mall
The Walk



PROJECT ► INDONESIA

Akmani Hotel, Legian – Bali
All Season Hotel – Nusa Dua, Bali
Pullman Hotel, Central Park – Jakarta
Cavington Hotel – Jogya
Novotel Hotel – Tangerang
Sol Marina Hotel – Serpong
Mercure Hotel – Surabaya
Pakubuwono The View Apartment – Jakarta
Coca-Cola Factory – Surabaya
Australia Embassy Office – Jakarta
Istana Presiden Bogor
The East Office – Jakarta
Wisma Soho Office – Jakarta
The Peak Apartment – Jakarta
XXL Cinema All Outlet – Indonesia

PROJECT ► SINGAPORE

Changi Water Reclamation Plant
Marina Band Sands
Norvatis Plant @ Tuas
Glory
Rio Casa Condominium
Mayflower Primary School
Biopolis Centre
NUS Laboratory
UMCi @ Pasir Ris
Sony A&A
40 Gul Circle
St Joseph Institution International School
Crystal Plant @ Jurong Island
Singapore General Hospital
Sime Darby Centre

PROJECT ► VIETNAM

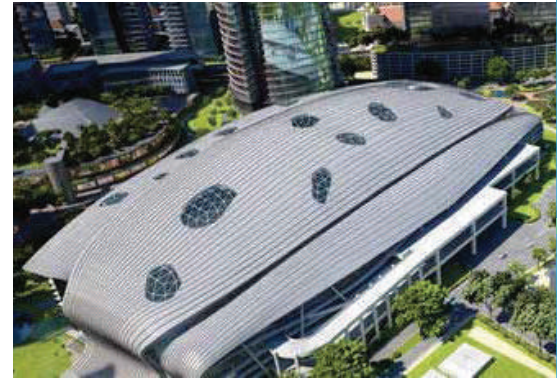
First Solar Factory
Nipro
DenEast Milk
Pepsico Suntory Factory
Cai Lan International Container Terminal
Intel
Olympus
Marigot Vietnam
Lotte Centre Ha Noi
Hyatt Regency Apartment
Hue Hospital
Intercontinental Resort and Spa
Bitexco Financial Center
Hilton Saigon Hotel
JW Marriott

PROJECT ► CAMBODIA

Cho Ray Phnom Penh Hospital
Almond Hotel
Olypia City
Calmette Hospital
City Tower
The Bridge Showroom
Toyoko Inn Hotel
Thai Villiage Restaurant
Cazameridian Twin Tower
Era Phnom Penh Hotel
Era Siem Reap Hotel
Tela Gase Station Head Office
Mazda Showroom
Marriott Hotel
The Parkland

PROJECT ► PHILIPPINES

Filinvest Plaza E
BPO-Araneta
Winford Hotel
Citadine
Northgate DCS
Circuit BPO
Texas Instruments
Novotel Aqua
World Commerce Place
Palawan International Airport
Robinson's Naga
National Musuem – Philippines
81 Newport
Studio A
Batasan Congress

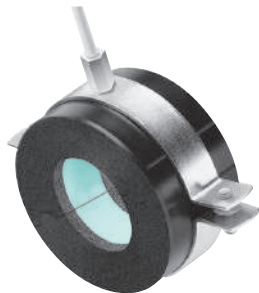


ACCESSORIES

SELF ADHESIVE FOAM TAPES



PIPE SUPPORT



K 414 GLUE

