

Appearance



Indoor Unit



Outdoor Unit







Remote Control



Wire Controller
OPTIONAL

Specifications

Model	Indoor		ASW-09CAR3DI	ASW-12CAR3DI	ASW-18CAR3DI	ASW-24CAR3DI
	Outdoor		AS-09CAR3DI	AS-12CAR3DI	AS-18CAR3DI	AS-24CAR3DI
Cooling capacity	Rated (Min~Max)	Btu/h	10000(2050-12000)	12300(4100-13600)	18000(4440-19000)	24400(6140-26000)
Power consumption		W	960(200-1200)	1170(400-1450)	1730(240-2200)	2260(230-2700)
Running current		A	4.4(0.56-5.32)	5.1(2.0-6.0)	7.7(2.3-10)	9.7(1.0-12)
CSPF (Cooling seasonal performance factor)		Wh/Wh	4.81	4.83	4.78	5.19
Energy efficiency star rating						
Power supply		V,Hz,Ph	220-240V~,50Hz,1Ph (power supply to indoor)			
Indoor unit	Indoor air flow (H)	m3/h(cfm)	600 (353)	650 (382)	950 (559)	1300 (765)
	Indoor sound level (H/L/S)	dB(A)	40/32/24	41/33/24	47/36/32	51/38/34
	Dimension (W*D*H)	mm	774*202*299	834*202*299	1004*223*320	1145*230*332
	Packing (W*D*H)	mm	831*282*371	891*282*371	1070*312*385	1210*327*400
	Net/Gross weight	Kg	7.5/9	8/12	11/13	13/17
Outdoor unit	Outdoor sound level	dB(A)	51	52	53	58
	Dimension (W*D*H)	mm	703*233*455	703*233*455	705*279*530	900*350*700
	Packing (W*D*H)	mm	760*305*510	760*305*510	825*345*595	1015*425*762
	Net/Gross weight	Kg	16/18	16/18	23/26	37/40
	Refrigerant charge	g	R32/360g	R32/360g	R32/690g	R32/1050g
	Design pressure	MPa	4.3/2.5	4.3/2.5	4.3/2.5	4.3/2.5
Refrigerant piping	Liquid side/Gas side	mm(inch)	Φ6.35/Φ9.52(1/4"/3/8")	Φ6.35/Φ9.52(1/4"/3/8")	Φ6.35/Φ12.7(1/4"/1/2")	Φ6.35/Φ12.7(1/4"/1/2")
	Max. refrigerant pipe length	m	25	25	25	30
	Max. difference in level	m	10	10	10	20
Indoor-Outdoor connection wiring (Not included)			4x1.0 mm ²	4x1.0 mm ²	4x1.5 mm ²	4x2.5 mm ²
Power supply wiring (Not included)			3x1.0 mm ²	3x1.0 mm ²	3x1.5 mm ²	3x2.5 mm ²
Thermostat type			Wireless Remote Control (Wifi/Remote Wired Controller optional)			

Remark:

1. All units are being tested and comply to ISO 5151, ISO 16358-1.
2. The noise level data reflects the level in anechoic chamber.
3. The above design and specifications are subject to change of product improvement without prior notice.
4. Nominal cooling capacity are based on the conditions:
27°C DB / 19°C WB indoor and 35°C DB outdoor.
5. Sound pressure levels are measured in anechoic chamber according yo JIS C 9612 standard. During actual operation, there are some discrepancies in sound pressure levels due to different room conditions.

ADDRESS : UNIT NO. T1-L16-2, TOWER 1, LEVEL 16, PJ33,
JALAN PROFESSOR KHOO KAY KIM, SEKSYEN 13, 46200 PETALING JAYA, SELANGOR



www.cnaux.com/index.aspx



www.auxgroup.com

AUX
AIR CONDITIONER

C-series

Leading inverter

FAST COOLING



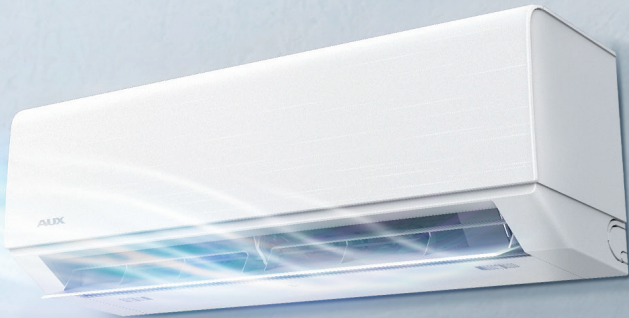
DC Inverter



Air supply technology



Easy installation



NONE-AGING NOT SUSCEPTIBLE TO DUST

HIPS compound material composed of light stabilizer.



日本研究開発センターが開発しました
AUX R&D Institute Japan

STANDARD

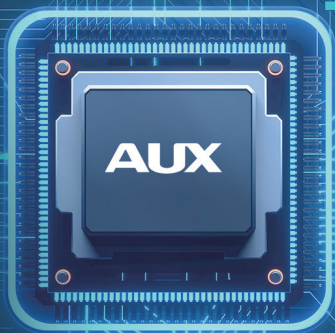
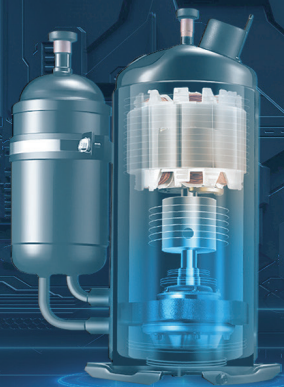
QUICK COLD	LARGE AIR VOLUME	30S FAST COOLING	WIDE VOLTAGE START	0.5°C PRECISE TEMPERATURE CONTROL	SLEEP	15M LONG-DISTANCE AIR FLOW	HYDROPHILIC ALUMINIUM FIN
POWER OUTAGES MEMORY	SELF DIAGNOSIS	ANTI-RUST CABINET	EASY TO INSTALL HANGING BOARD	ANTI-RESTART	7 GRADE INTELLIGENT ADJUSTMENT	5VA SECURITY CONTROLLER BOX	FIRE PROOF ELECTRIC BOX
FLUORIDE LEAKAGE PROTECTION	GOLDEN FAN	LOW VOLTAGE LIMIT	LOW COOLING CAPACITY LOSS	SUPER EMC PERFORMANCE	SELF-CLEANING	ANTI-MOSQUITO FILTER	DISPLAY ON/OFF
TIMER	FULL DC FREQUENCY CONVERSION	ECO ENERGY SAVING	EASY INSTALL PCB	ERROR CODE DISPLAY	LEVEL INDICATOR INDOOR BRACKET	4D AIR FLOW	

OPTIONAL

WIFI2.0	CONTROLLER
---------	------------

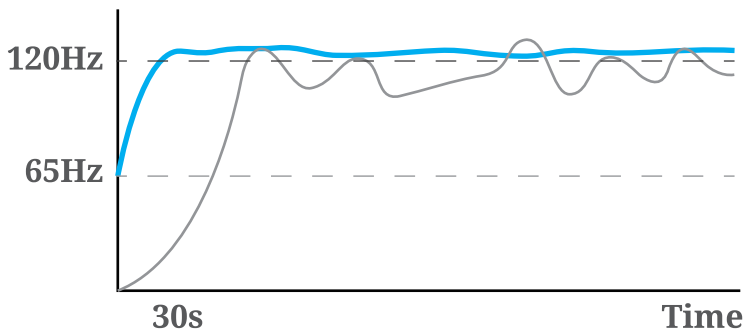
5TH GENERATION NEW INTELLIGENT AI VECTOR

Elaborately created by the Japanese R&D Center with an investment of **RM 80** million during **6 years**.



Energy saving, efficiency **↑15%**
High-efficiency multistage motor
Integrated innovative structure
High reliability, service life up to **10 years**
Technology of oil-control circulation
Noise reduce by **↓3dB**
Application of aero acoustics damping materials.

New intelligent AI vector control algorithm developed by the AUX Japanese R&D Center . Equipped with 40μm precise intelligent chip, featuring **250 DMIPS** performance



■ With APM algorithm ■ Without APM algorithm



SAVE ENERGY

Strong cooling capacity, low magnetism + **PFC PAM** intelligent algorithm control.

Compressor running at ultra high frequency of **120Hz** for high cooling output capacity.

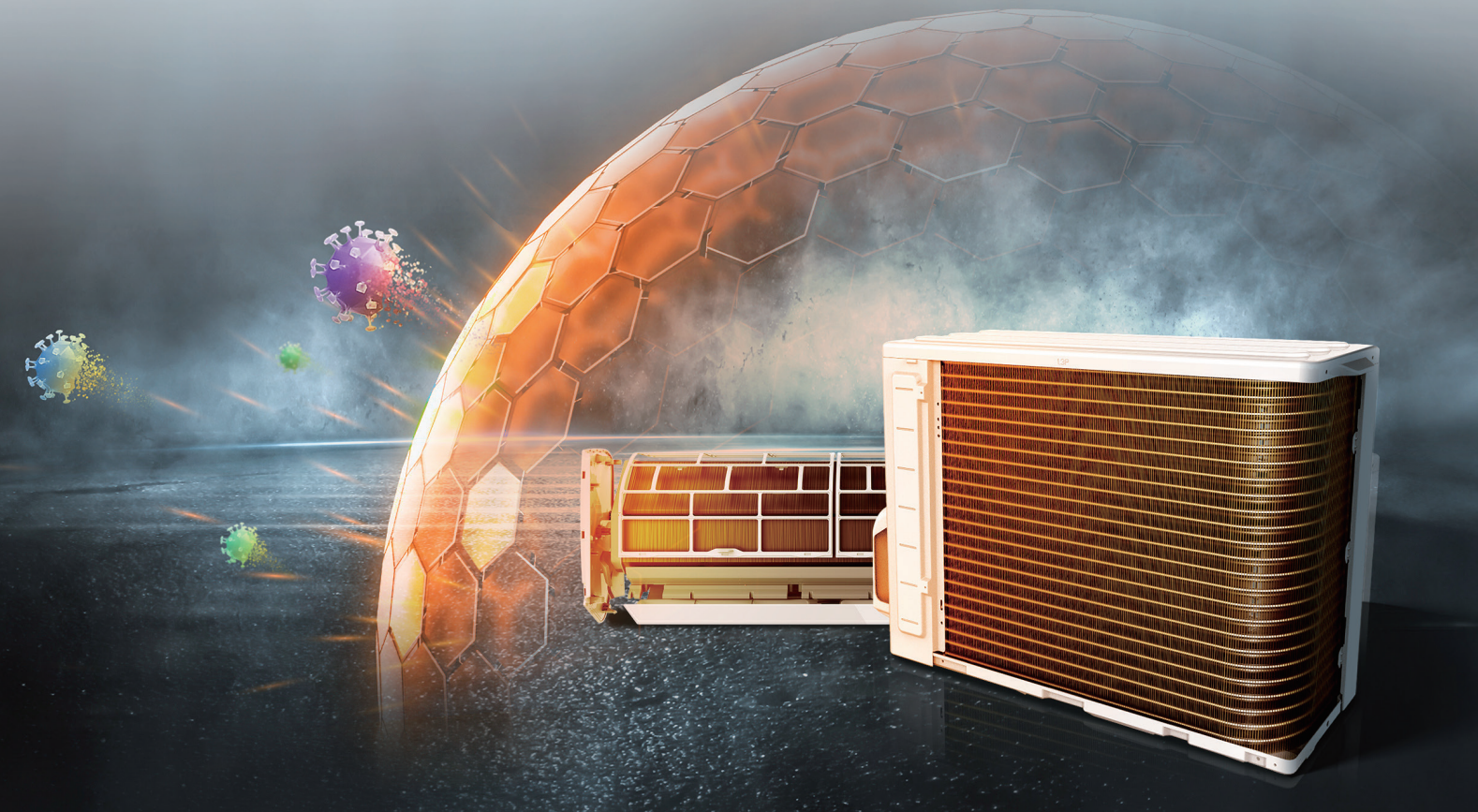
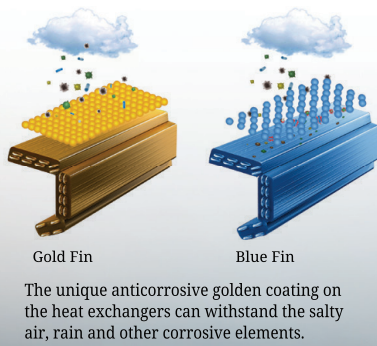
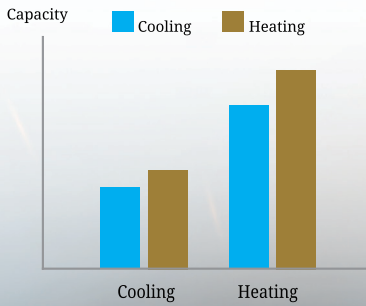
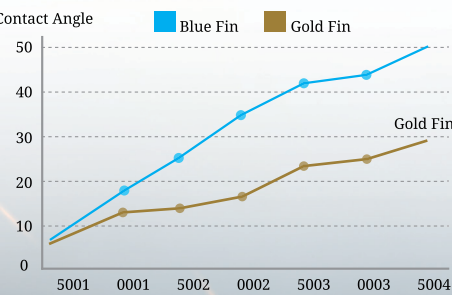
Fast cooling with high frequency (**65Hz**) start up enable fast cooling comfort.

REFRIGERANT R32 LEAKAGE PROTECTION



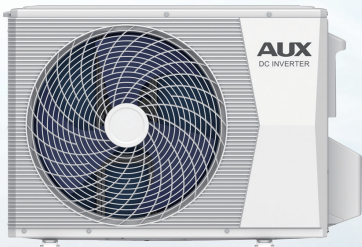
GOLD FIN

Gold fin is more resistant to oxidation and corrosion than blue fins for most condensers.

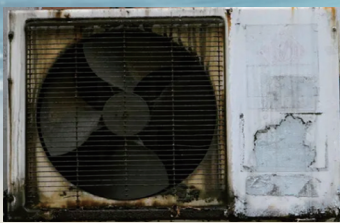


ACCOMPANY WITH YOU LIKE THE SEA BREEZE WITHOUT ANY TRACE

The outdoor unit's heat exchanger fins are processed applied a special anti-corrosion treatment. The surface is covered with a thin acrylic resin layer to enhance the fin's resistance to salt corrosion.



VS



Impact-resistant
upright standing
recommended

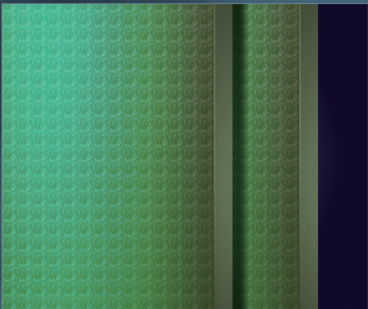


5VA SECURITY CONTROLLER

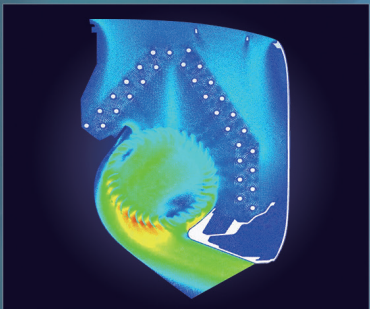
The highest level of fire-proof materials are adopted to protect the internal electronic control.

ULTRA-SILENCE FOR BETTER SLEEPING

Outstanding software and hardware leave you with no noise.

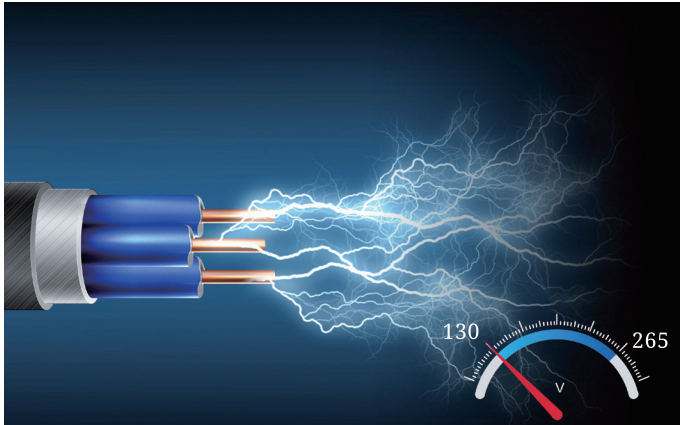
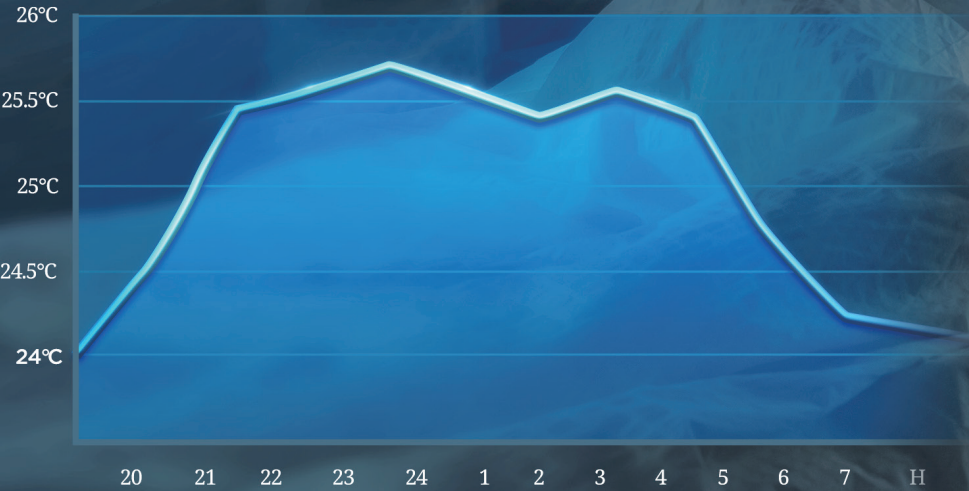


Unique torque compensation algorithm with vibration decreased.



Optimal design of air duct for fluid dynamics simulation.

Sleep patterns



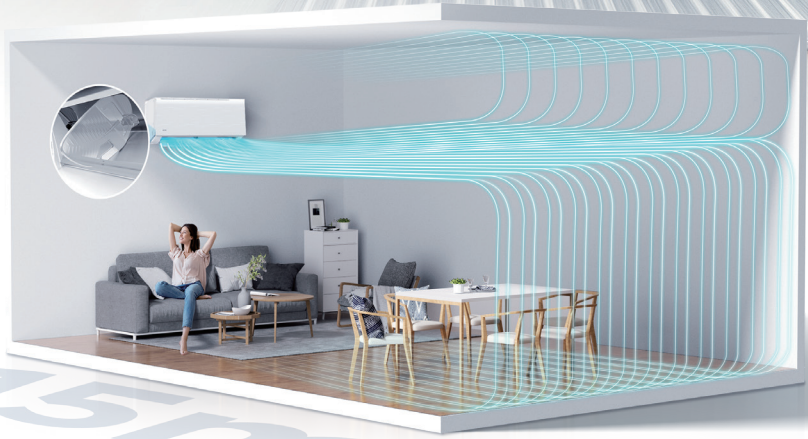
Easy response to unstable voltage



Non-inductive 0.5°C precise

4D AIR FLOW

Helps to improve air distribution vertical and horizontal air flow.



AERODYNAMIC MICRO-ARC

Coolness reaching every corner of the room as far as 15 meters.

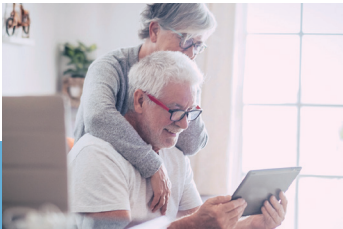
Disclaimer: Measured based on experimental environment (ASW-24CAR3DI)

OPTIONAL

INTELLIGENT WIFI



Switch ON the air conditioner on the way home



Switch ON the air conditioner for the elderly at home



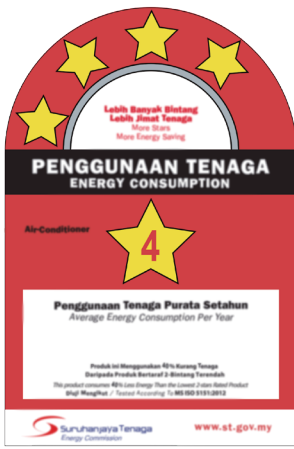
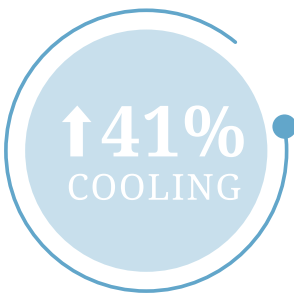
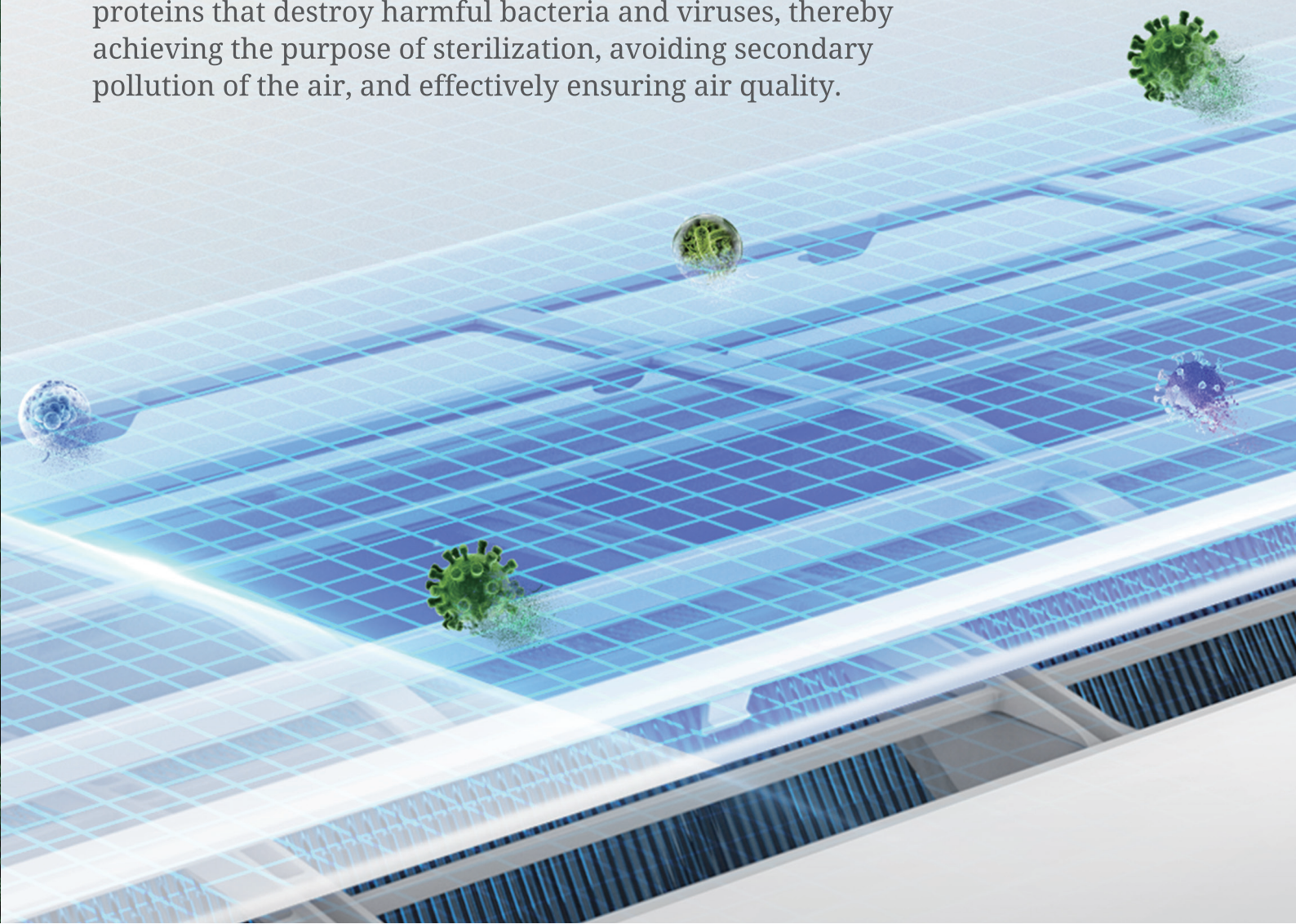
NEW ENVIRONMENTAL PROTECTION CONCEPT FOR A BETTER FUTURE

Environmental friendly refrigerant R32 with better performance and is more environmentally friendly. Refrigerating capacity of R32 is higher than that of R410A under the same frequency. Lower GWP value.

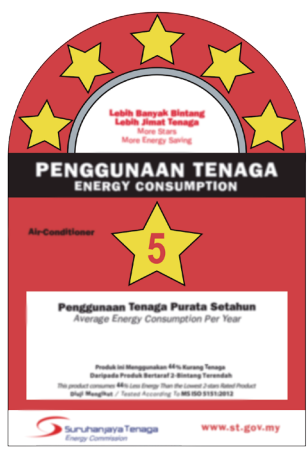


HEPA FILTER

This filter uses a new type of lysozyme material, which is sprayed on the surface of the filter material. When the air passes through the filter, it can effectively dissolve the shell proteins that destroy harmful bacteria and viruses, thereby achieving the purpose of sterilization, avoiding secondary pollution of the air, and effectively ensuring air quality.



ASW-09\12\18CAR3DI



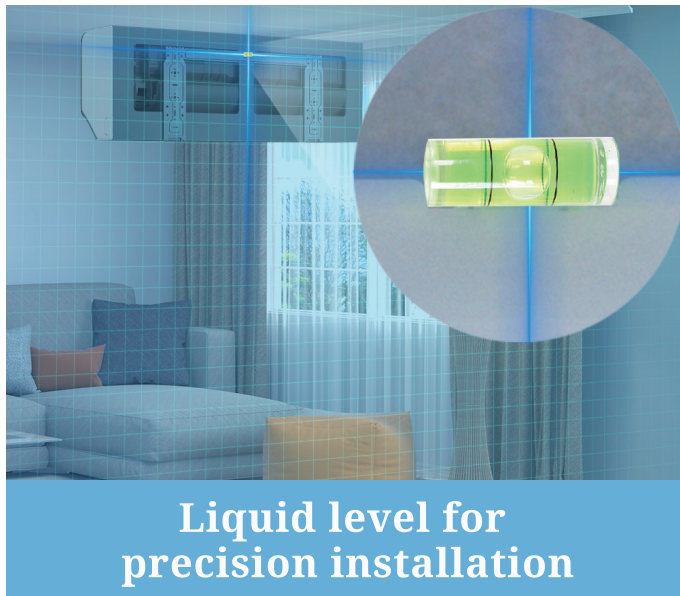
ASW-24CAR3DI



Indicator to Replace Filter

Start function: Press the U/D swing 6 times
Turn off function: Press the U/D swing 4 times

EASILY TO INSTALLATION AND MAINTENANCE



Detached lowerjaw for servicing

Modular design of core components, with the maintenance efficiency.

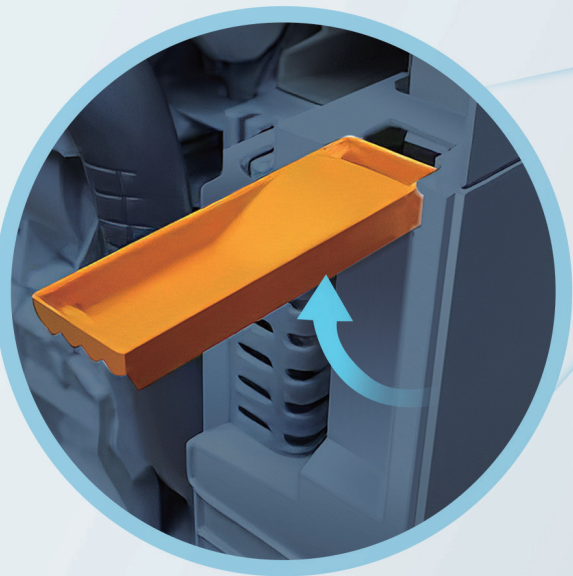


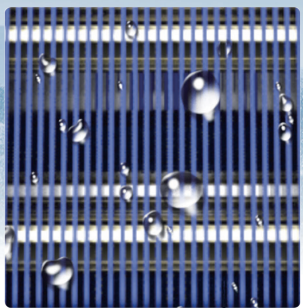
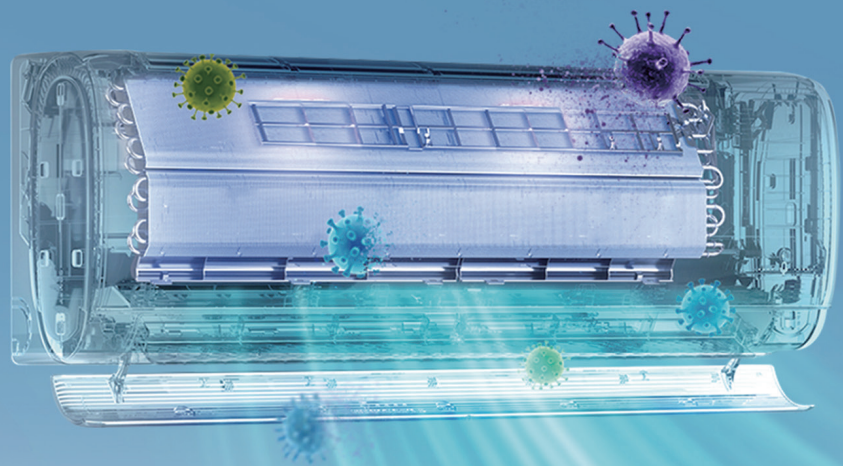
Plate Support

Plate support for large operation space. The installation efficiency is greatly improved.

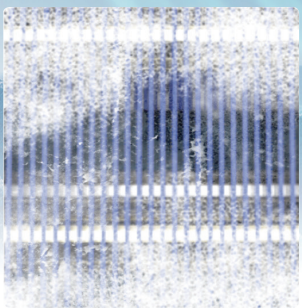


4-STEP AUTOMATIC SELF CLEAN

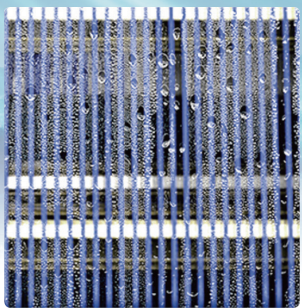
Keep the air fresh and enjoy healthy life



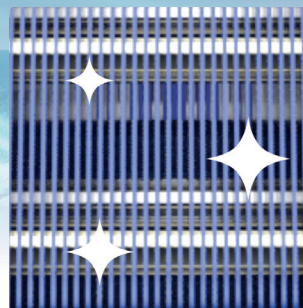
indoor unit condensation



frosting



defrosting



Auto air drying



The water outlet is on the right side



The water outlet is on the left side